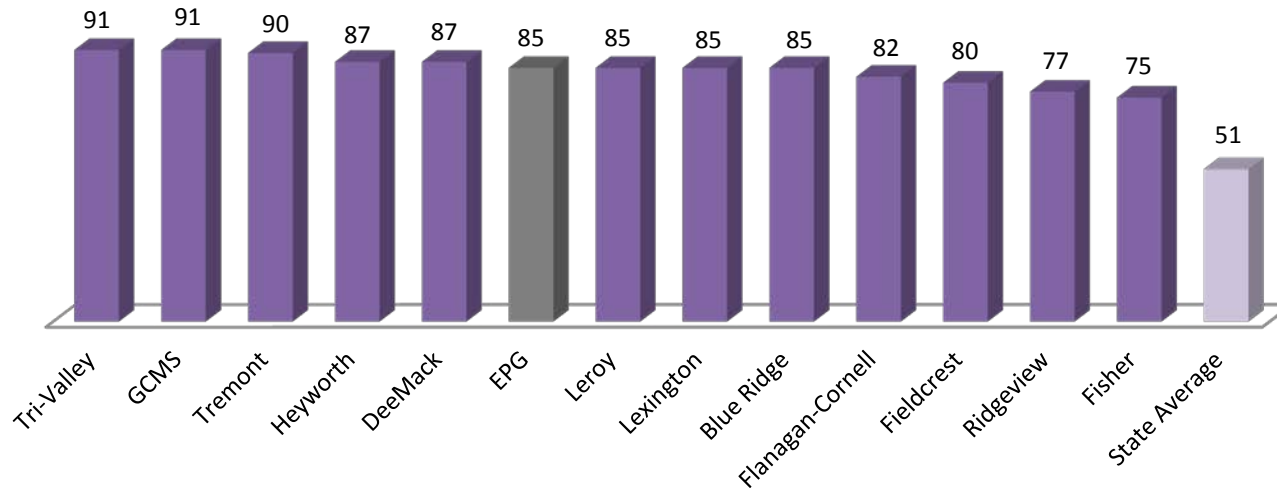


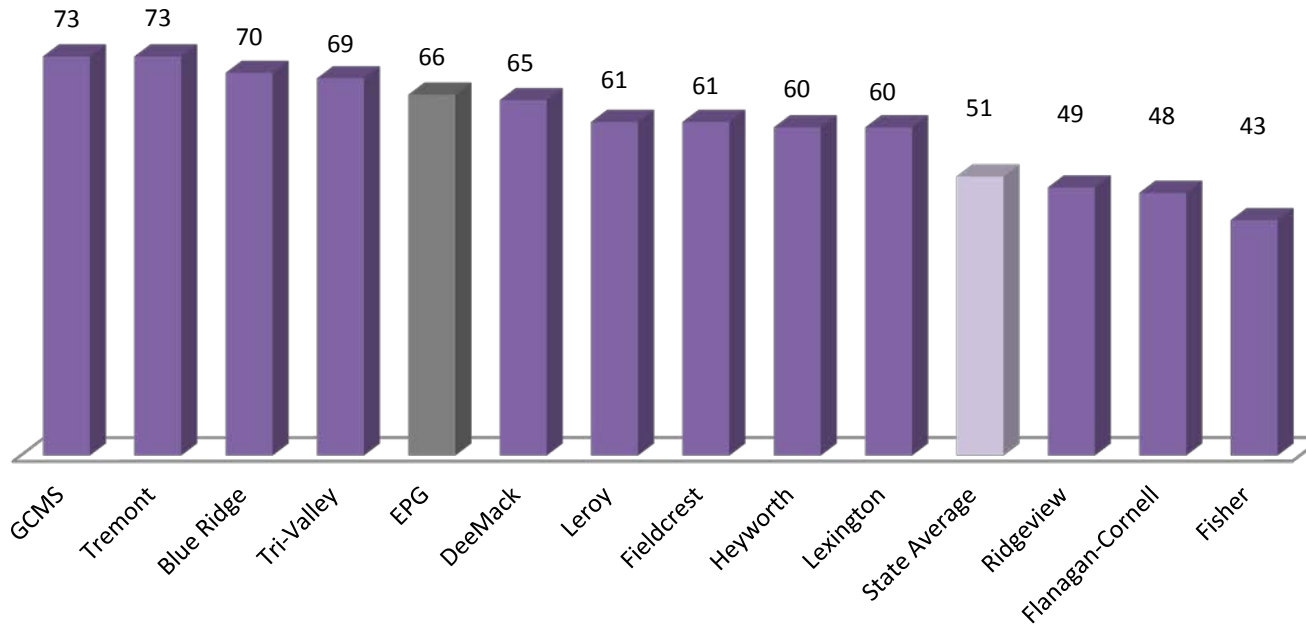
## 2011 State Assessment Comparison & Review

- EPG PSAE scores were the highest they have been since EPG became a district.
  - This is true of each PSAE subtest: reading, math, science, and writing.
  - This is true of the PSAE composite score.
- No HOIC school has seen greater improvements in % of students meeting and exceeding standards on the PSAE than has EPG.
  - This has moved us from the middle of our conference (based on PSAE scores) to 5<sup>th</sup> based on PSAE composite.
  - We are one of only a few schools who have shown growth in scores when comparing the past three years.
- EPG scores higher than many schools with less low income students in the HOIC.
  - EPG is 8<sup>th</sup> in HOIC in % of low income students.
  - EPG scores higher on the PSAE than 5 of the schools with a lower % of low income students.
- EPG staff members are transitioning to the Common Core State Standards. The assessments aligned with the new standards will not be available until 2014. We will continue to take the ISAT and PSAE until then. Starting this past fall, we are focusing student learning on the new standards. Changes in curriculum may show some inconsistency on standardized assessments over the next few years as the assessment is underway. We believe starting this transition now will be challenging, but allows us to provide the best learning foundation for EPG students' long term success.
- EPG 3<sup>rd</sup>-8<sup>th</sup> grades met AYP in math and reading at each grade based on the ISAT.
- Growth Model Tables
  - These tables provide us with some information on how past classes have achieved over time. It balances looking at a grade (knowing there is variation in student groups each year).
  - These tables will not be as informative over the next few years as we transition to new Common Core State Standards and the new generation of assessments.

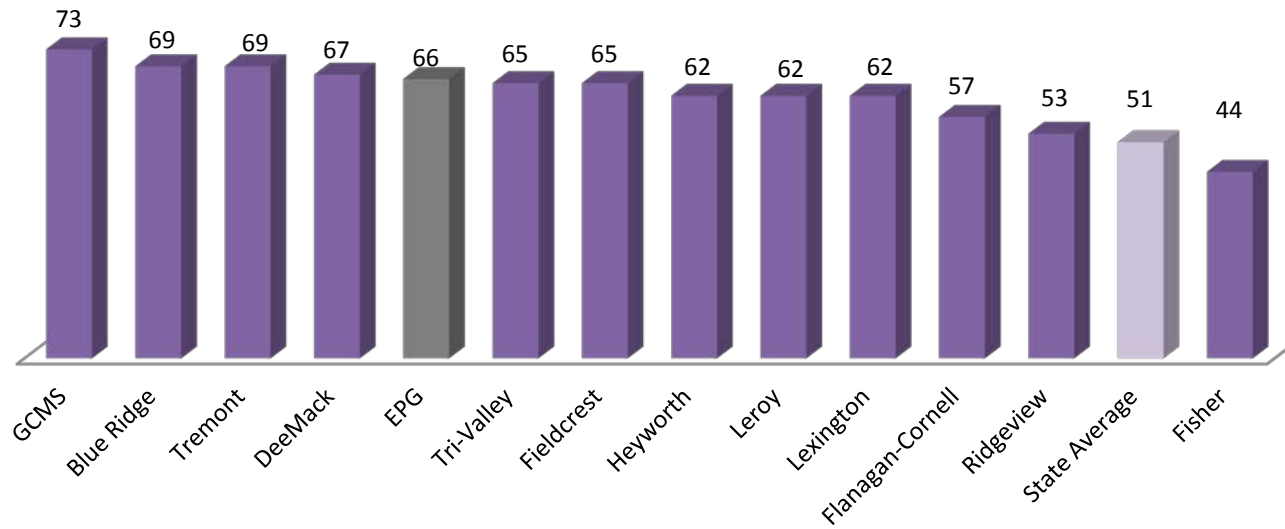
## HOIC Schools: All Subjects, All Grades % of Students Meeting or Exceeding Standards



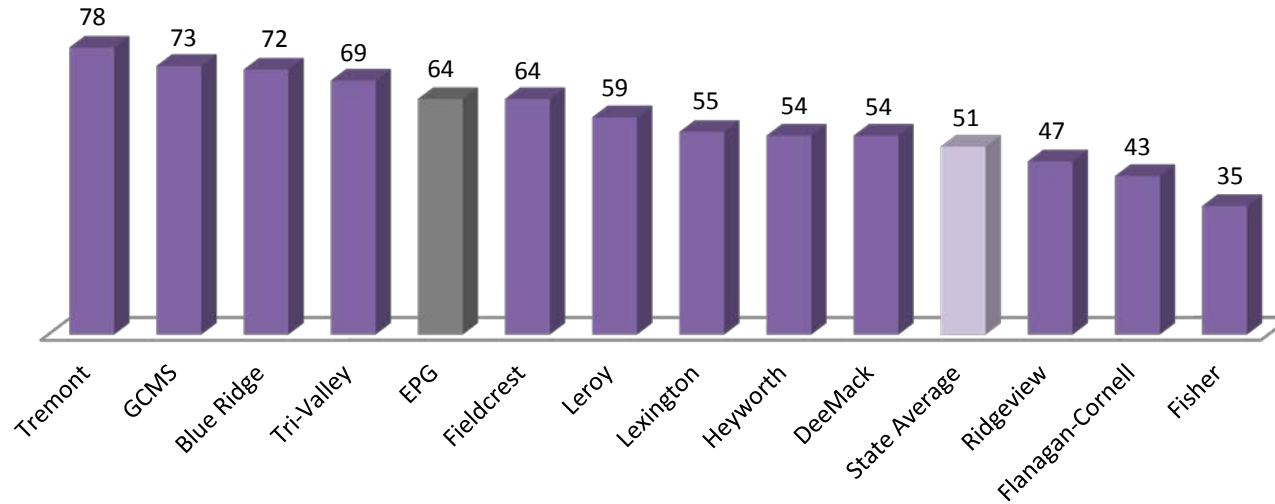
## PSAE Composite % of Students Meeting or Exceeding Standards



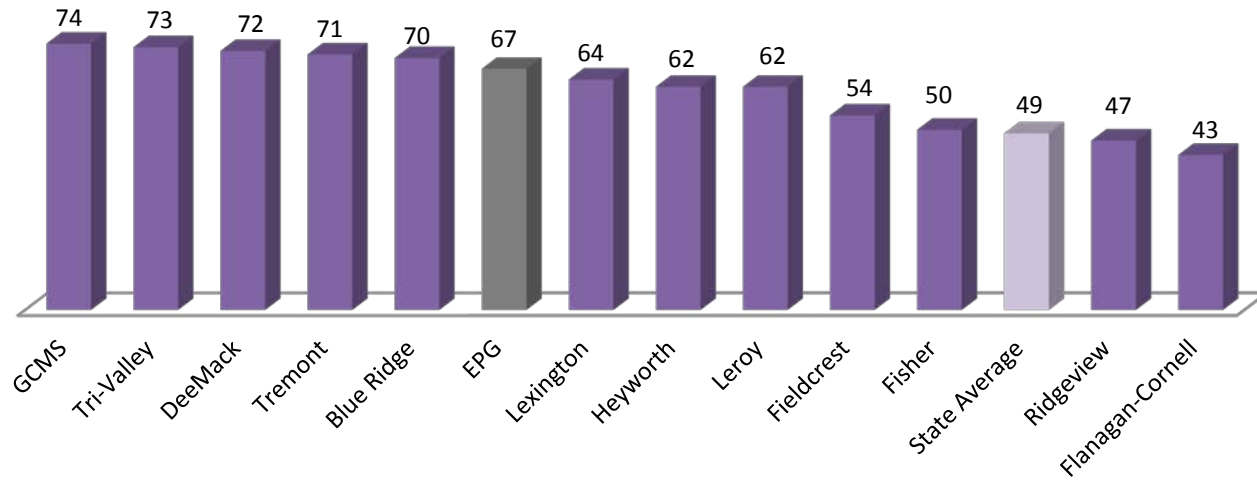
## PSAE Reading % of Students Meeting or Exceeding Standards



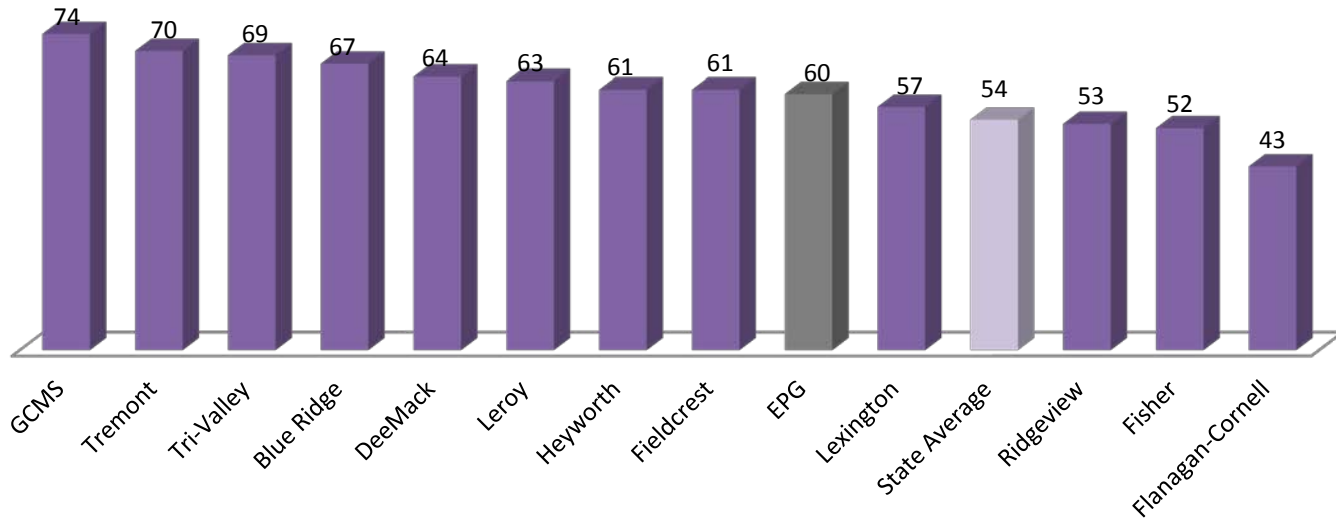
## PSAE Math % of Students Meeting or Exceeding Standards



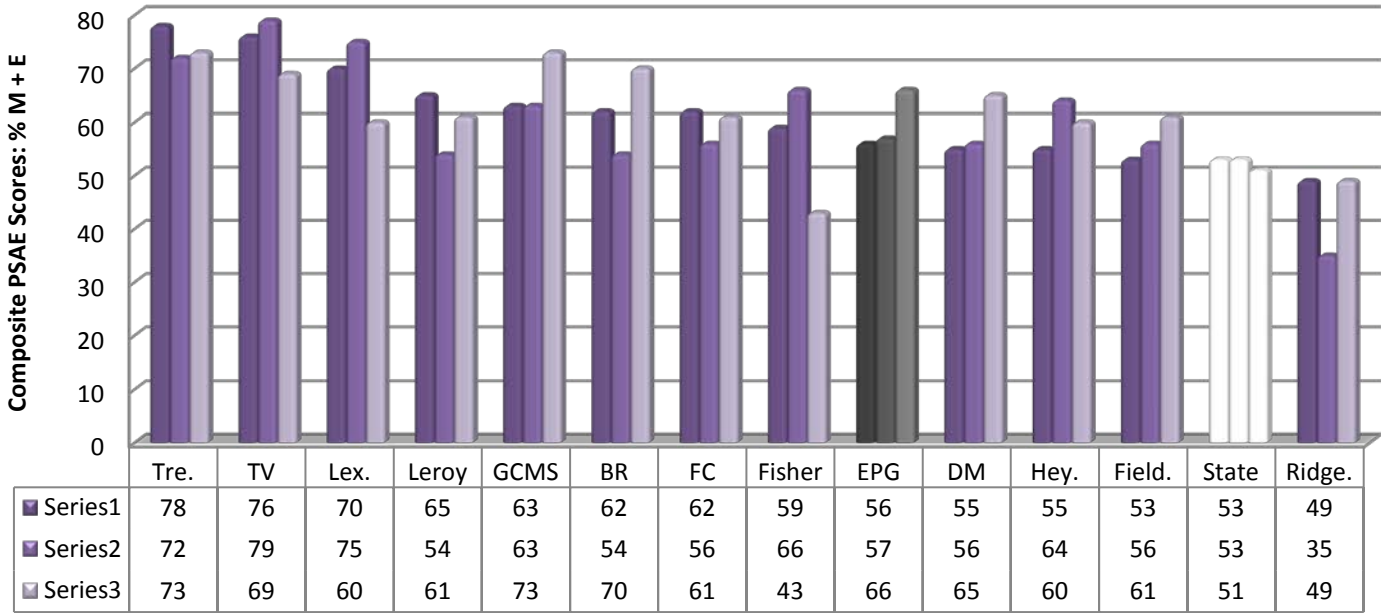
## PSAE Science % of Students Meeting or Exceeding Standards



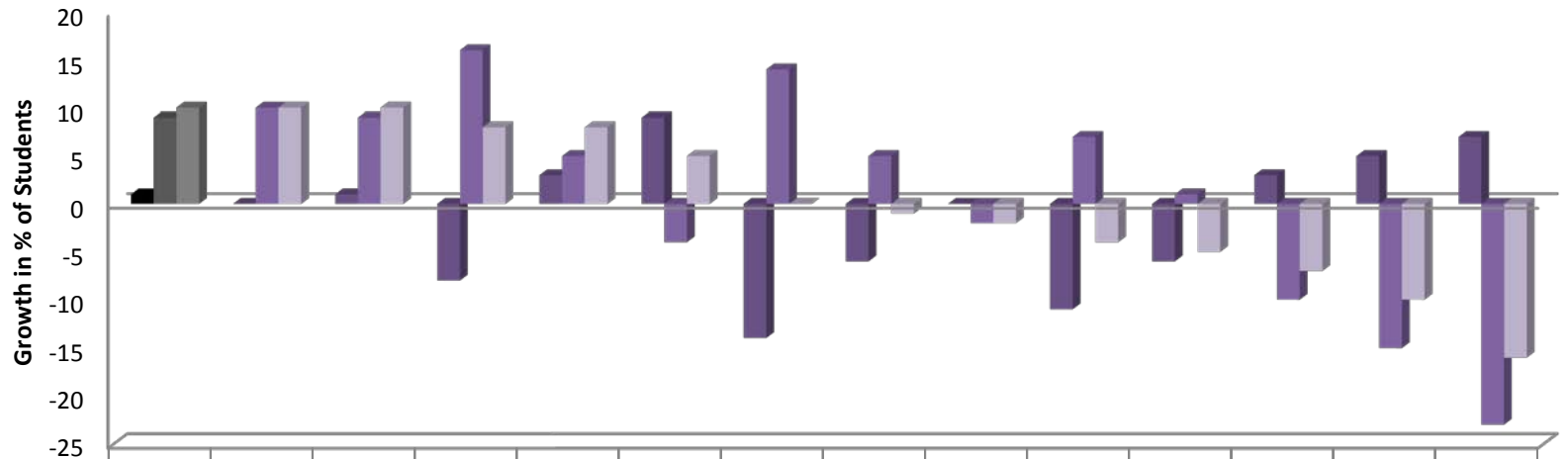
## PSAE Writing % of Students Meeting or Exceeding Standards



### PSAE Trends Past 3 Years

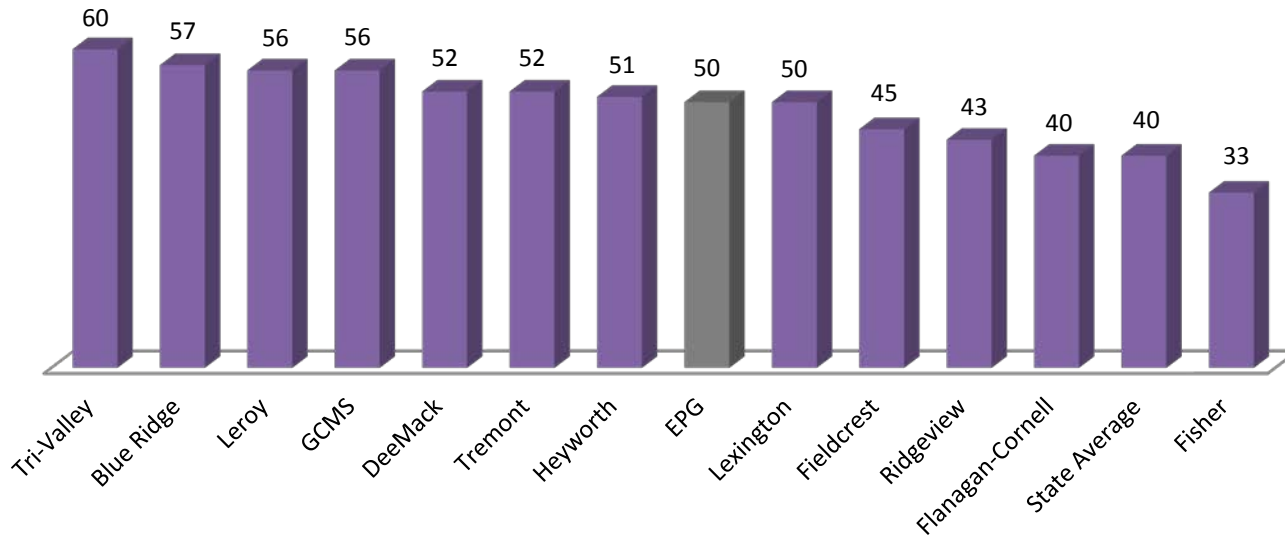


### PSAE Growth Past 3 Years

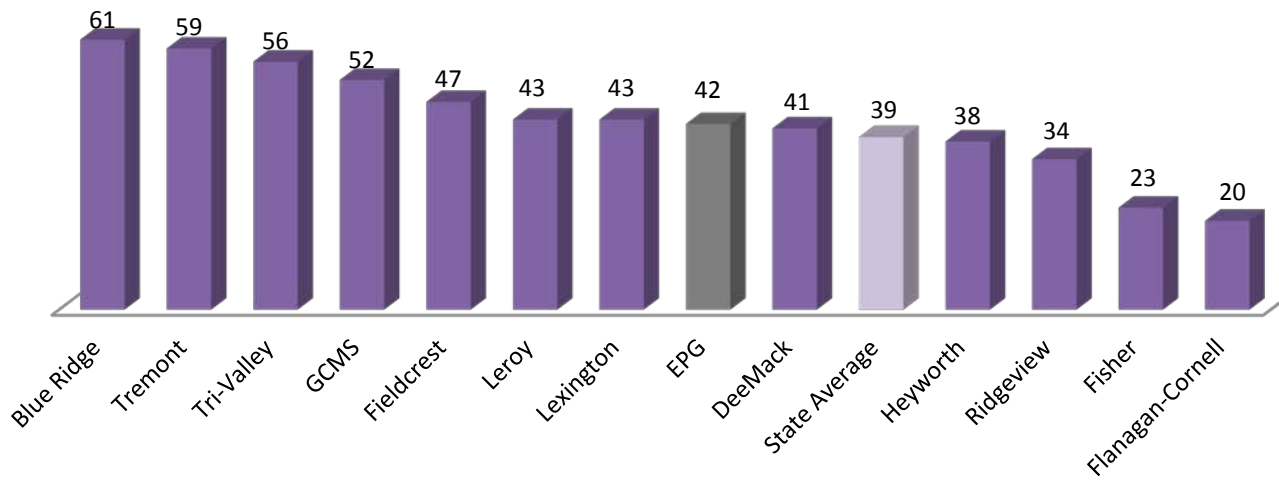


	EPG	GCMS	DM	BR	Field.	Hey.	Ridge.	FC	State	Leroy	Tre.	TV	Lex.	Fisher
Series1	1	0	1	-8	3	9	-14	-6	0	-11	-6	3	5	7
Series2	9	10	9	16	5	-4	14	5	-2	7	1	-10	-15	-23
Series3	10	10	10	8	8	5	0	-1	-2	-4	-5	-7	-10	-16

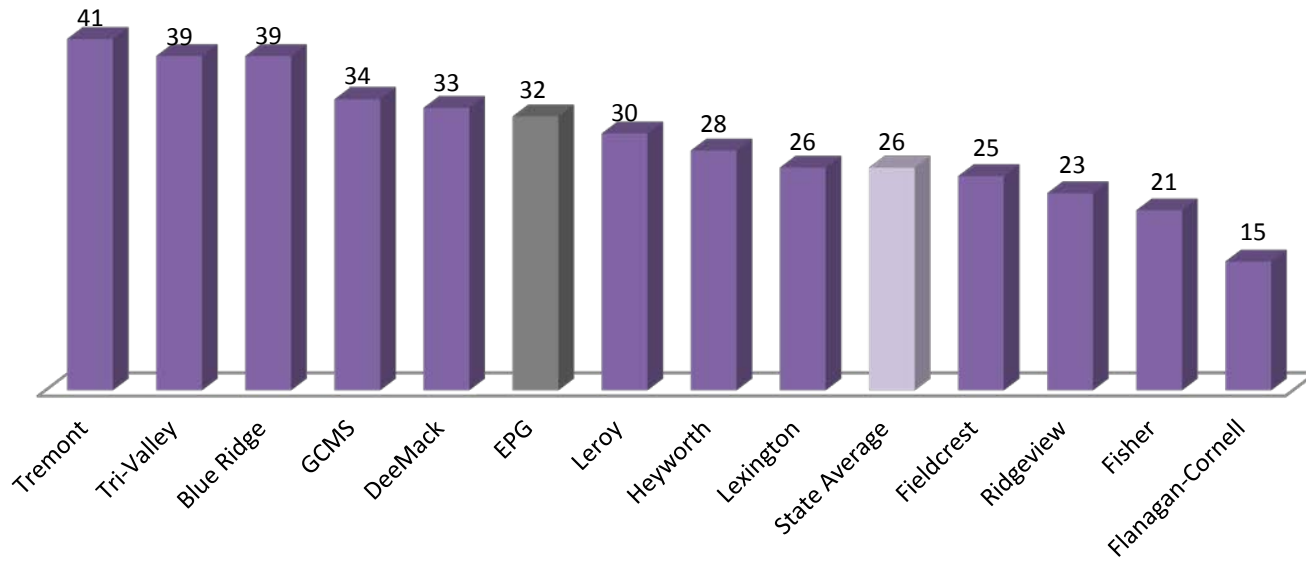
## ACT Reading % of Students Above Benchmark Score



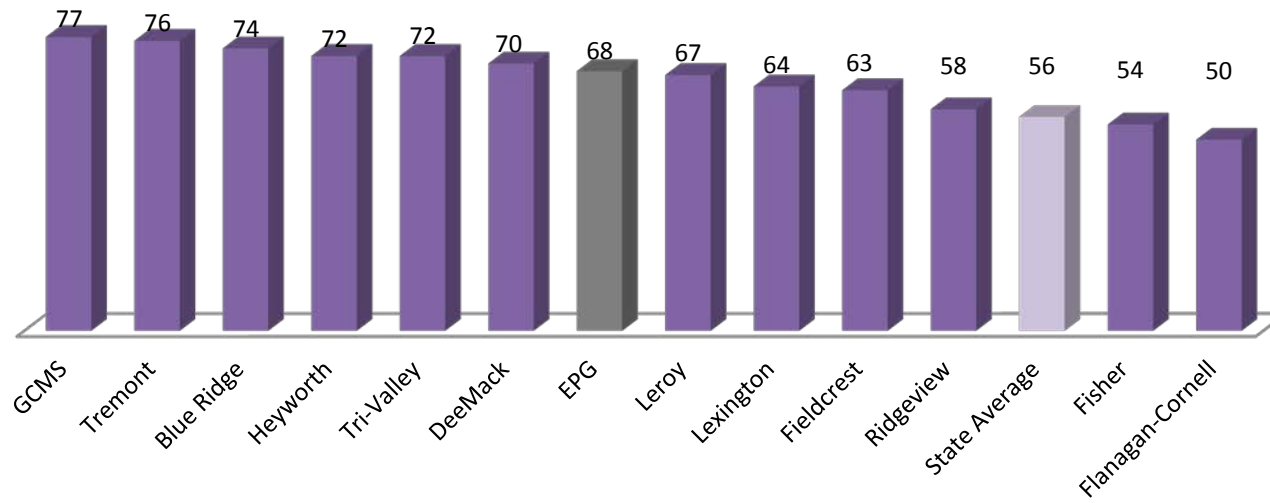
## ACT Math % of Students Above Benchmark Score



## ACT Science % of Students Above Benchmark Score

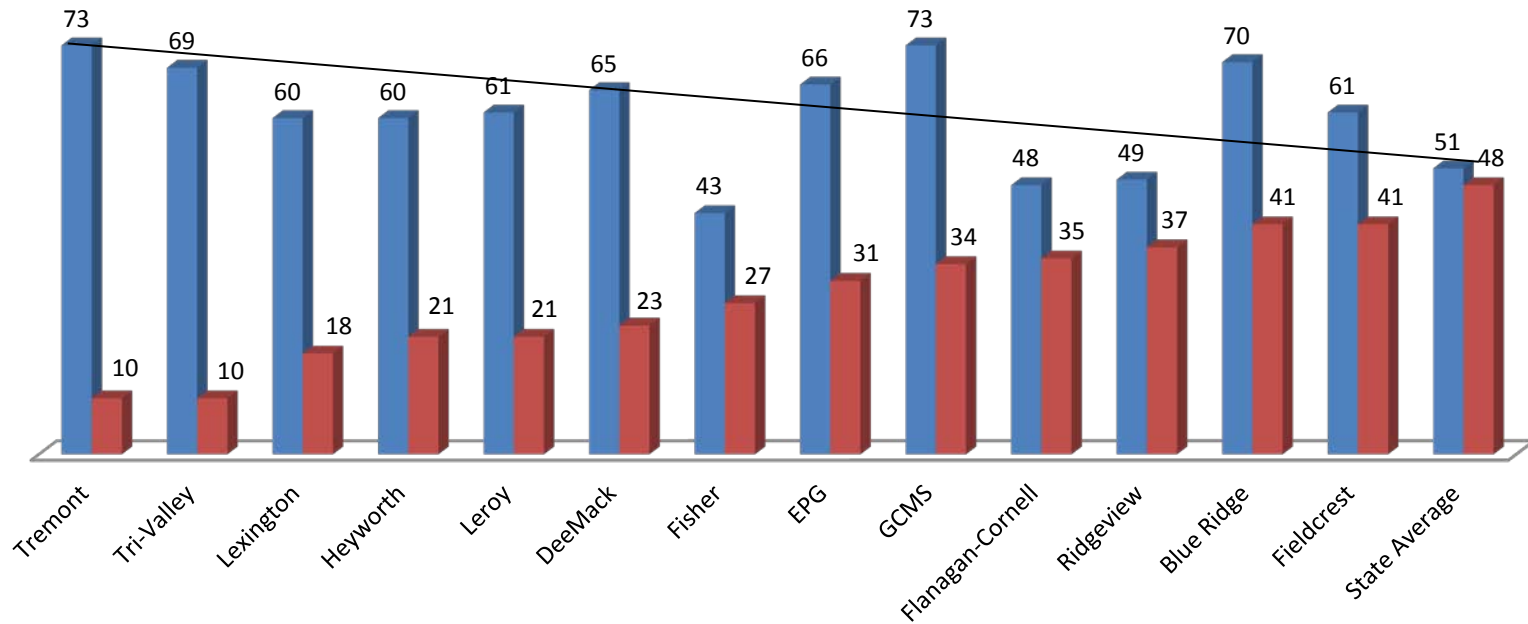


## ACT English % of Students Above Benchmark Score



## 2011 PSAE Composite & Low Income

■ % Students Meeting and Exceeding Standards   ■ % Low Income



## 2011 PSAE Composite & Low Income

■ % Students Meeting and Exceeding Standards   ■ % Low Income

